



Project: **OUR LADY OF THE LAKE PARISH CENTER**

650 A AVENUE
 LAKE OSWEGO, OR 97034

© 2009 MACKENZIE GROUP. ALL RIGHTS RESERVED.
 THESE DRAWINGS ARE THE PROPERTY OF MACKENZIE GROUP AND SHALL REMAIN THE PROPERTY OF MACKENZIE GROUP. NO REUSE OR REPRODUCTION IN ANY MANNER WITHOUT PRIOR WRITTEN PERMISSION.

REVISIONS:
 1. REVISION DATA
 2. REVISION DATA
 3. REVISION DATA
 4. REVISION DATA
 5. REVISION DATA
 6. REVISION DATA
 7. REVISION DATA
 8. REVISION DATA
 9. REVISION DATA
 10. REVISION DATA

SHEET TITLE:

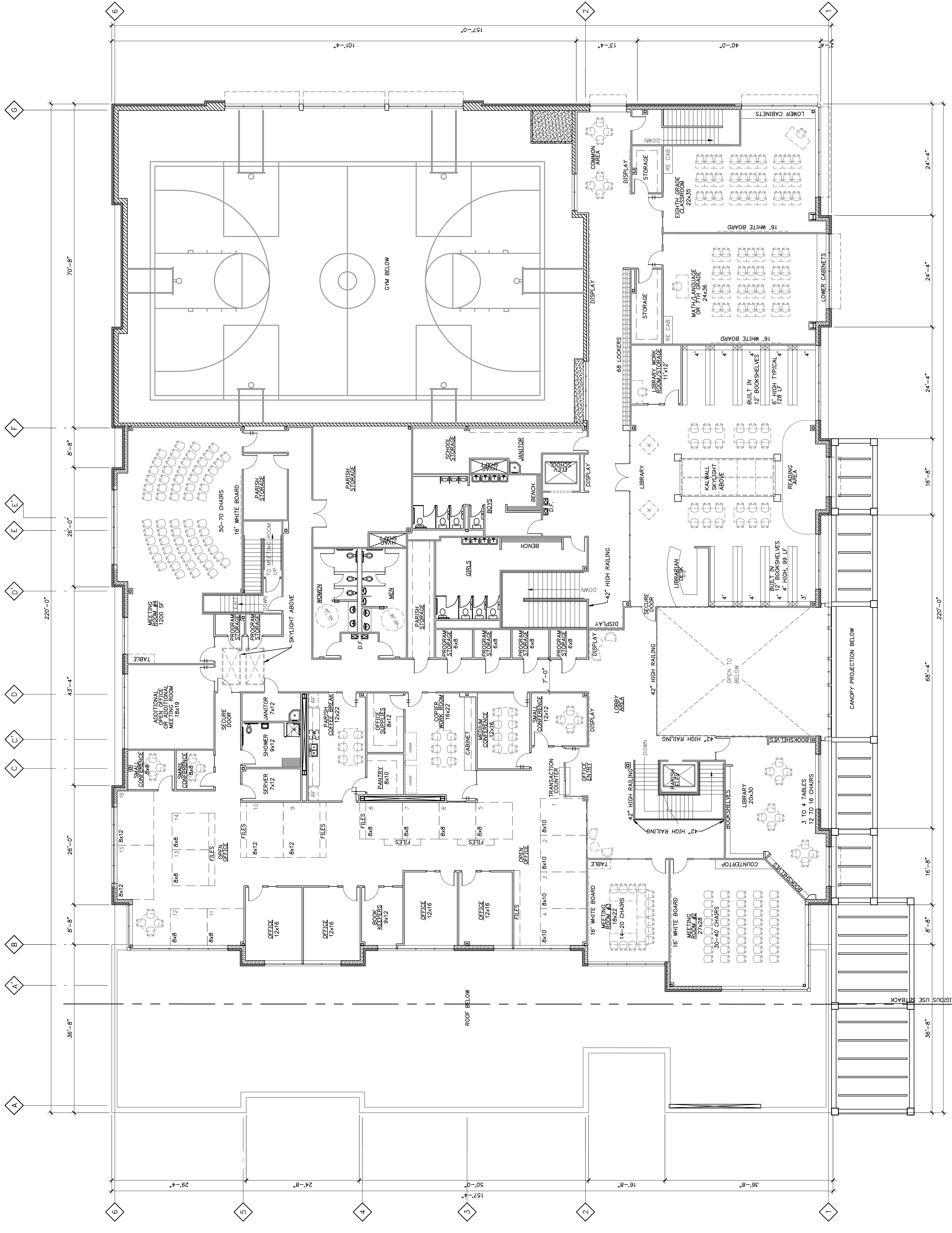
SECOND FLOOR

DRAWN BY: EHW/REW
 CHECKED BY: RCT
 SHEET

A2.2

JOB NO. 2040296.00

FLOOR PLAN REVIEW SET - OCTOBER 30, 2009



- LEGEND**
- EXTERIOR WALL - "RAIN SCREEN" W/BRICK OR CEMENT BOARD SIDING (SEE ELEVATION), AIR SPACE, R-11 RIGID INSULATION, EXTERIOR GYP SHEATHING, STRUCTURAL STUDS, R-11 BATT INSULATION, AND INTERIOR GYP BOARD.
 - EXTERIOR WALL - "RAIN SCREEN" W/BRICK OR CEMENT BOARD SIDING (SEE ELEVATION), AIR SPACE, R-11 RIGID INSULATION, EXTERIOR GYP SHEATHING, STRUCTURAL STUDS, R-11 BATT INSULATION, AND INTERIOR GYP BOARD.
 - INTERIOR GYM WALL - 8" CMU WALL (CURRING AS OCCURS)
 - FULL HEIGHT INTERIOR WALL - GYP BOARD, METAL STUDS, AND SOUND INSULATION
 - THRU GRID INTERIOR WALL - GYP BOARD, AND METAL STUDS, EXTEND 6" ABOVE CEILING

